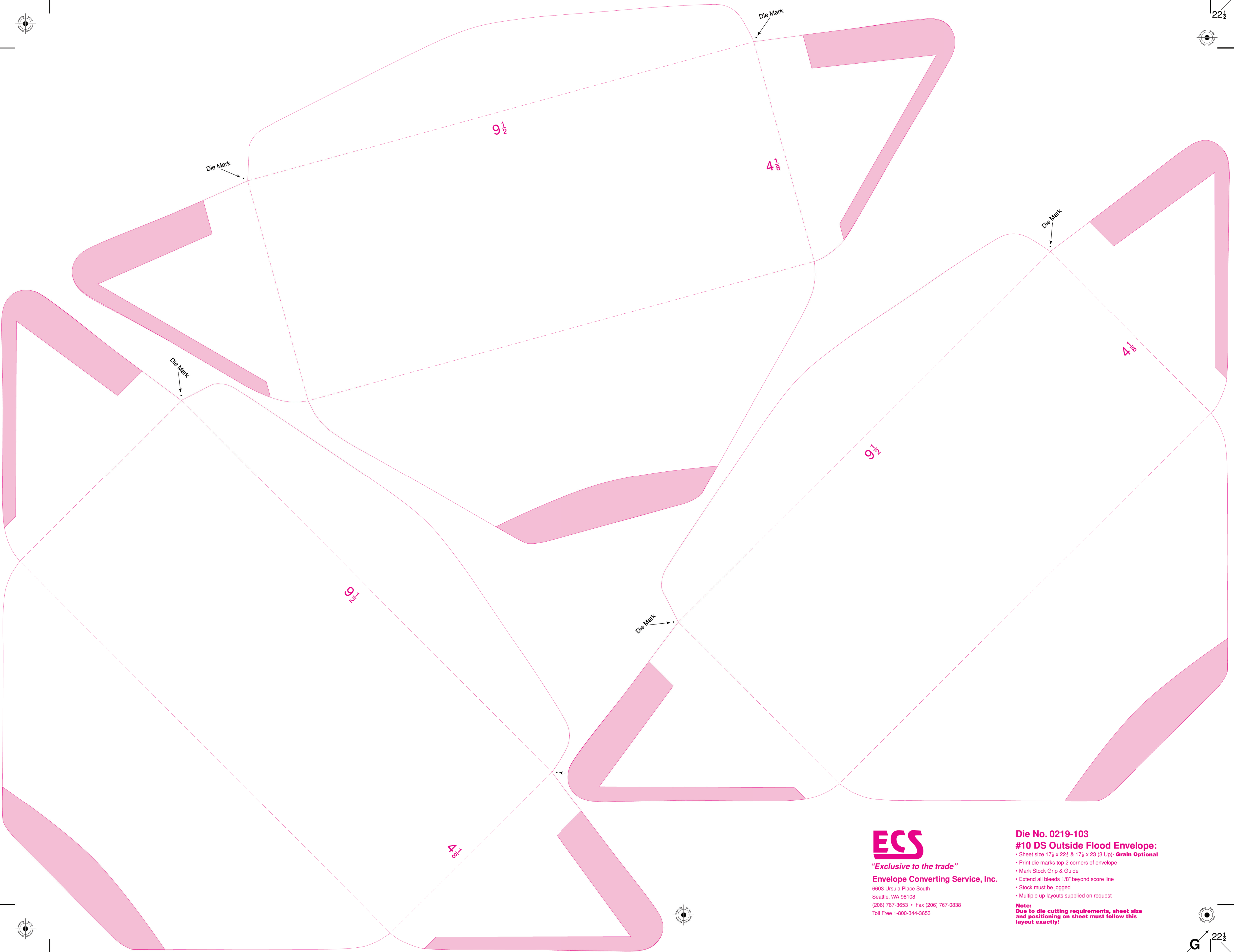




22½ 23



G 22½ 23



*"Exclusive to the trade"*

**Envelope Converting Service, Inc.**

6603 Ursula Place South  
Seattle, WA 98108  
(206) 767-3653 • Fax (206) 767-0838  
Toll Free 1-800-344-3653

**Die No. 0219-103  
#10 DS Outside Flood Envelope:**

- Sheet size 17½ x 22½ & 17½ x 23 (3 Up)- **Grain Optional**
- Print die marks top 2 corners of envelope
- Mark Stock Grip & Guide
- Extend all bleeds 1/8" beyond score line
- Stock must be jogged
- Multiple up layouts supplied on request

**Note:**  
Due to die cutting requirements, sheet size and positioning on sheet must follow this layout exactly!