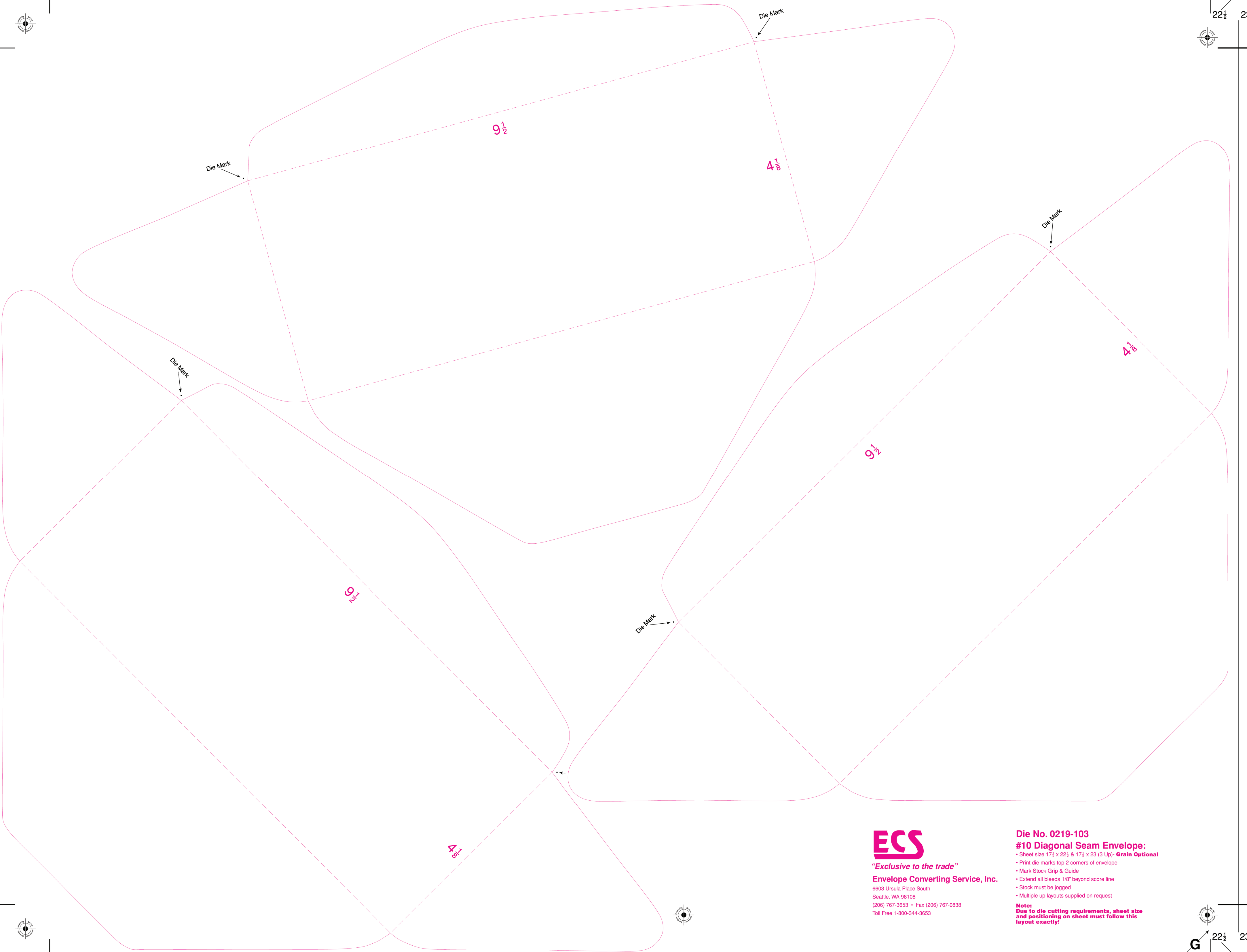




22½ 23



“Exclusive to the trade”
Envelope Converting Service, Inc.
 6603 Ursula Place South
 Seattle, WA 98108
 (206) 767-3653 • Fax (206) 767-0838
 Toll Free 1-800-344-3653

Die No. 0219-103
#10 Diagonal Seam Envelope:
 • Sheet size 17½ x 22½ & 17½ x 23 (3 Up)- **Grain Optional**
 • Print die marks top 2 corners of envelope
 • Mark Stock Grip & Guide
 • Extend all bleeds 1/8" beyond score line
 • Stock must be jogged
 • Multiple up layouts supplied on request
Note:
Due to die cutting requirements, sheet size and positioning on sheet must follow this layout exactly!



G 22½ 23